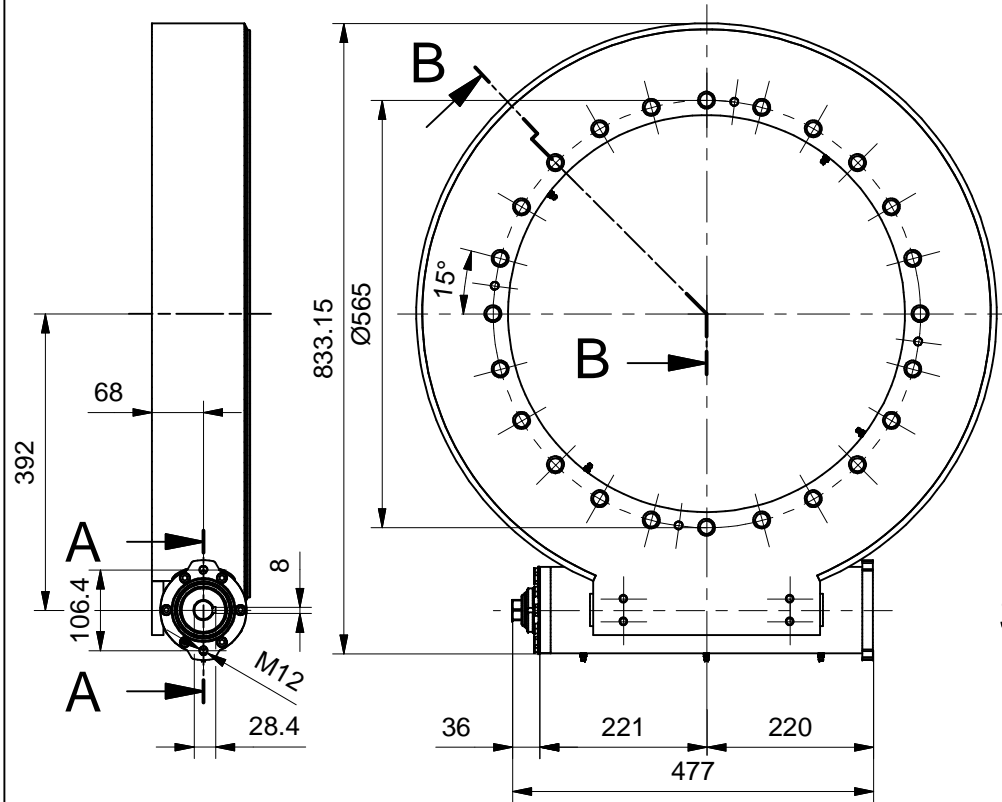
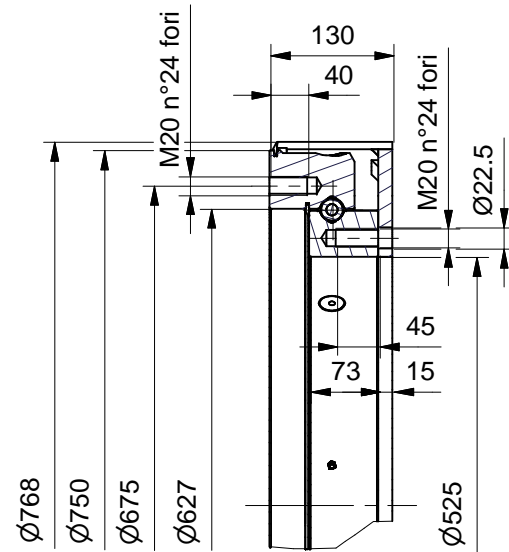


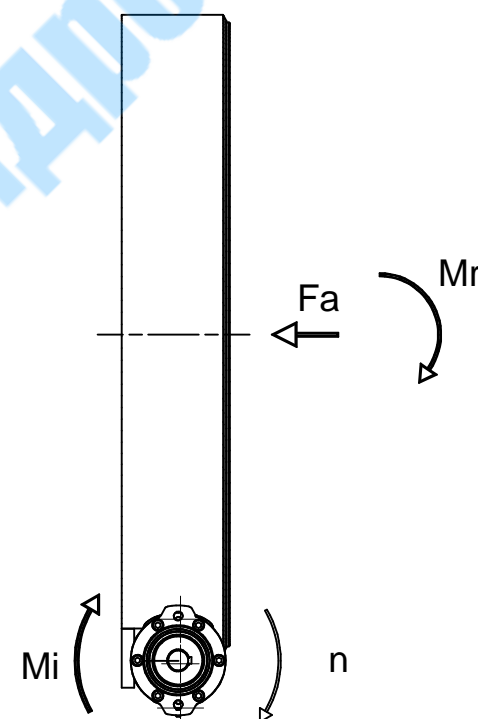
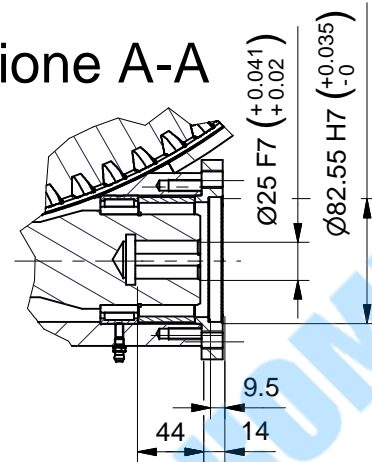
DIMENSIONI D'INGOMBRO - OVERALL DIMENSIONS



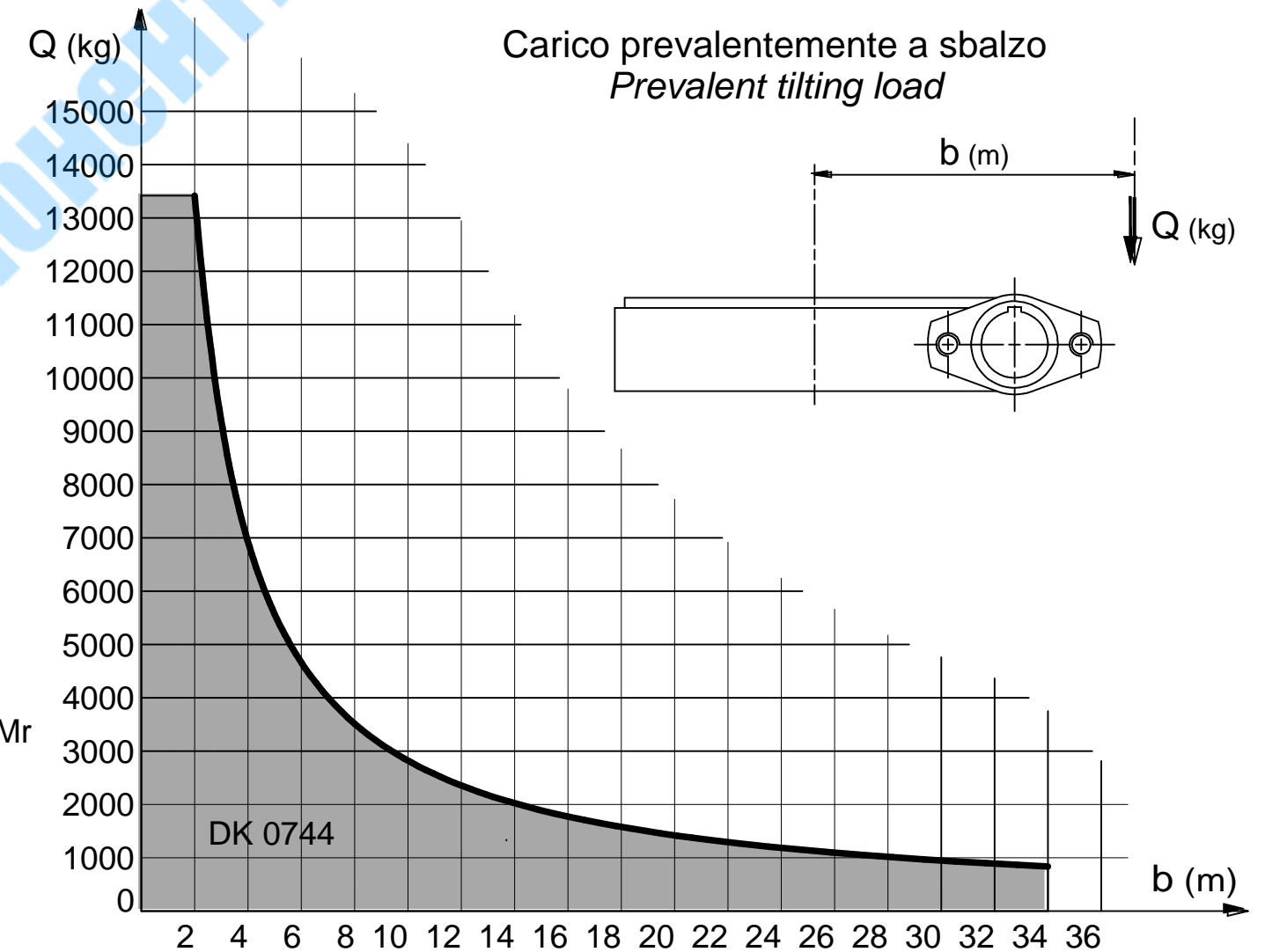
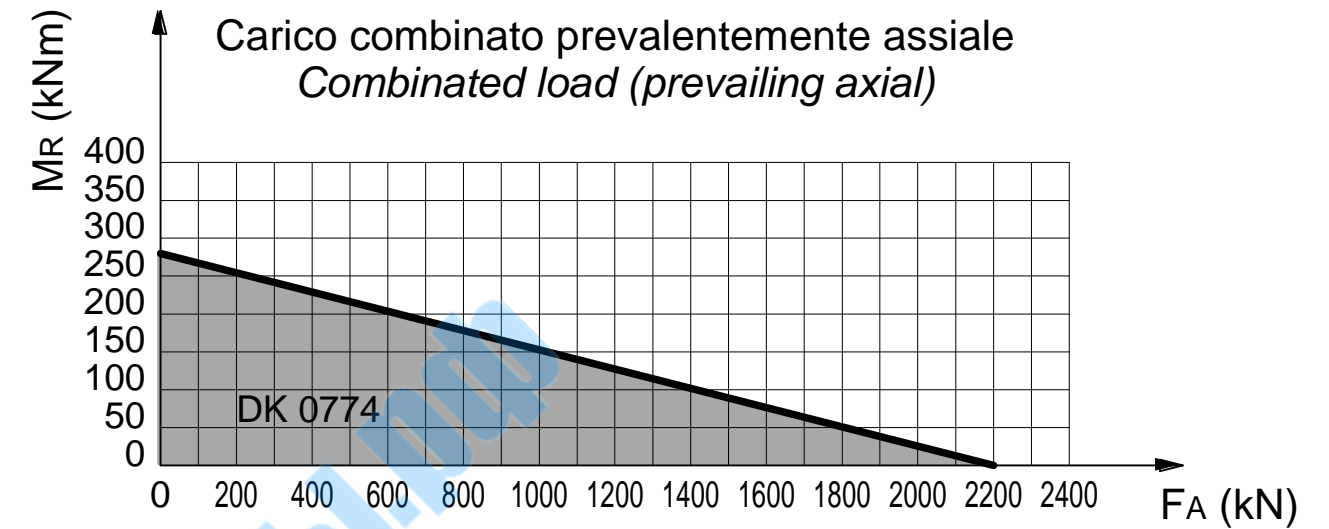
Sezione B-B



Sezione A-A



DIAGRAMMI DEI CARICHI - LOADS DIAGRAMS



DATI TECNICI - TECHNICAL DATA

Rapporto di riduzione
Gear ratio $r = 1 : 104$

Giri max. ingresso
Max. input rpm $n = 150 \text{ rpm}$

Coppia max. ingresso
Max. input torque

serv.continuo e/o giri max
continuous / max rpm
di picco
peak

$M_i = 195 \text{ Nm}$

$M_p = 400 \text{ Nm}$

Coppia max. uscita
Max. output torque
(rendimento - efficiency 70%)

serv. continuo
continuous
di picco
peak

$M_u = 14.200 \text{ Nm}$

$M_p = 29.120 \text{ Nm}$

Coppia max. uscita in stallo (C.frenante)
Max stall output torque (Braking torque)

$M_f = 43.200 \text{ Nm}$

Peso
Weight $\text{kg } 210$



42048 RUBIERA (RE) ITALY

SCHEDA TECNICA - TECHNICAL SHEET
GRUPPO RALLA DI ROTAZIONE - SLEWING RING
DK0744 - CORPO IN ACCIAIO - TENUTA LABBRO
DK0744 - STEEL CASE - LIP SEAL

COD. GRRDK07440 REV. 02